

## Redmine - Defect #27804

### Restriction of user visibility isn't working with internal authentication

2017-12-15 10:59 - Philip Heise

<b>Status:</b>	Needs feedback	<b>Start date:</b>	
<b>Priority:</b>	Normal	<b>Due date:</b>	
<b>Assignee:</b>		<b>% Done:</b>	0%
<b>Category:</b>	Security	<b>Estimated time:</b>	0.00 hour
<b>Target version:</b>		<b>Affected version:</b>	3.3.1
<b>Resolution:</b>			
<b>Description</b>			
Hi,			
I'm using Redmine 3.3.1 (Debian Stretch). I have two authentication methods configured: internal and LDAP. In the Settings I use the following settings:			
- User visibility: Members of visible projects			
- Member management: All Roles			
- Permissions: Manager members			
I dicovered that the restriction to view only members of visible projects (in every project's members configuration) only works for users with LDAP authentication. If a user account uses the internal authentication it can view the list of all redmine user accounts.			

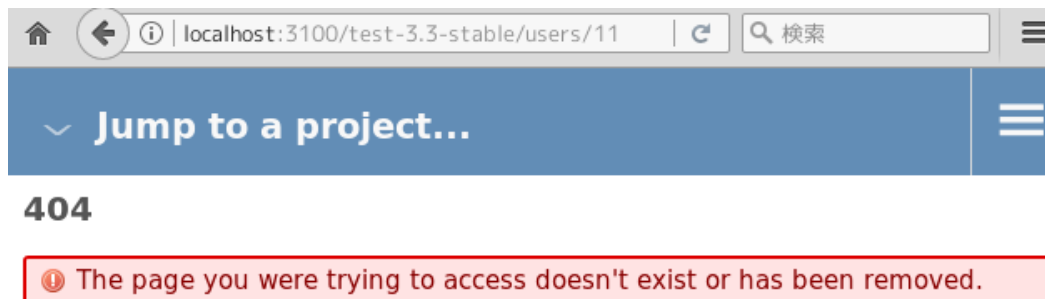
#### History

##### #1 - 2018-01-13 18:38 - Toshi MARUYAMA

- File *show-user.png* added

- Status changed from *New* to *Needs feedback*

I cannot reproduce on vanilla Redmine [3.3.5](#).  
I got 404 on both of internal and ldap.



[Back](#)

Philip Heise wrote:

If a user account uses the internal authentication it can view the list of all redmine user accounts.

Which form is the **list**?

##### #2 - 2018-02-14 19:58 - Philip Heise

- File *foto.png* added

Which form is the **list**?

It's the user select dialog that opens when you want to add new users in the project's configuration.

#### Files

show-user.png  
foto.png

14.9 KB  
51.2 KB

2018-01-13  
2018-02-14

Toshi MARUYAMA  
Philip Heise