

Redmine - Feature #5298

Store attachments in sub directories

2010-04-13 01:22 - Istvan DEMETER

| | | | |
|---|--------------------|------------------------|------------|
| Status: | Closed | Start date: | 2010-04-13 |
| Priority: | Normal | Due date: | |
| Assignee: | Jean-Philippe Lang | % Done: | 0% |
| Category: | Attachments | Estimated time: | 0.00 hour |
| Target version: | 2.3.0 | | |
| Resolution: | Fixed | | |
| Description To prevent Redmine's storage_path's (by default: File.join RAILS_ROOT, 'files') index growing too large (we have so many file-s there, that accessing to the this directory was getting to become slow). Files already present in the storage will still available, but the newly uploaded file will be storeg in a subdirectory. The directory structure: RAILS_ROOT/files/1004/25/100425124312_filename_or_hash.extension. Happy pathcing :) | | | |
| Related issues: | | | |
| Has duplicate Redmine - Feature #9908: The /files directory should contain at... | | Closed | |
| Has duplicate Redmine - Feature #2228: Multilevel upload dirs to accomodate 1... | | Closed | 2008-11-25 |

Associated revisions

Revision 10990 - 2012-12-13 13:07 - Jean-Philippe Lang

Store attachments in subdirectories (#5298).

Existing files can be moved to their target subdirectories using rake redmine:attachments:move_to_subdirectories.

Revision 10993 - 2012-12-13 14:18 - Jean-Philippe Lang

NoMethodError: private method `now' called for DateTime:Class error in tests with ruby < 1.9.3 (#5298).

History

#1 - 2012-12-13 13:09 - Jean-Philippe Lang

- Tracker changed from Patch to Feature
- Status changed from New to Closed
- Assignee set to Jean-Philippe Lang
- Target version set to 2.3.0
- Resolution set to Fixed

Feature added in [r10990](#). Attachments are now stored in subdirectories per month (eg. 2012/12).

A rake task was added to move existing files to their target subdirectories:

```
rake redmine:attachments:move_to_subdirectories
```

#2 - 2012-12-17 07:51 - Hannes Meier

THANK YOU SO MUCH!

JA IST DENN HEUT SCHON WEIHNACHTEN?

(engl.: is it already christmas eve?)

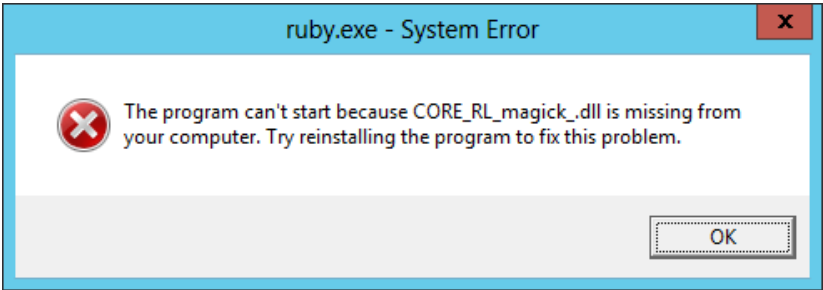
#3 - 2013-09-24 17:38 - Mohamed Ahmed

- File system_error.png added

Failed to run on my machine, Windows 2012 Server x64
Bitnami ruby stack v1.9.3-14 installed to C:\BitNami\rubystack-1.9.3-14

Environment:

- Redmine version 2.3.3.stable
- Ruby version 1.9.3-p231 (2012-05-25) [i386-mingw32]
- Rails version 3.2.13
- Environment production
- Database adapter Mysql2
- Redmine plugins:
- no plugin installed



And here is the [Trace file](#)

#4 - 2013-09-24 17:43 - Mohamed Ahmed

- File trace.txt added

Files

| | | | |
|---|---------|------------|----------------|
| 0001-Store-file-in-y-m-d-format-sub-dir-to-prevent-direct.patch | 1.65 KB | 2010-04-12 | Istvan DEMETER |
| system_error.png | 7.33 KB | 2013-09-24 | Mohamed Ahmed |
| trace.txt | 14.5 KB | 2013-09-24 | Mohamed Ahmed |